

Work and Health Programme Pioneer Wales



maximus

Work and Health
Programme
— ■■ —

In
partnership
with



Department
for Work &
Pensions

What is WHP Pioneer?

This service provides specialist employment support for people in **Wales** who are **not in work**.

WHP Pioneer is the latest phase of Universal Support, delivered by Maximus on behalf of the Department for Work and Pensions.

maximus

Work and Health
Programme
— ■■ —


Department
for Work &
Pensions
In
partnership
with



Tailored support

WHP Pioneer supports individuals to:



Create a **CV**, apply for jobs, and prepare for interviews and work placements



Learn new **skills**, train in a new sector and gain qualifications



Be more **confident** and improve their health and wellbeing



Find a new **job** or **self-employment** and settle into their role



Referral process

Individuals can refer themselves to WHP Pioneer via:



maximus

Work and Health
Programme
— ■ ■ —


Department
for Work &
Pensions
In
partnership
with

Find out more:



whpp.maximusuk.co.uk

0300 456 8106

PioneerWales@maximusuk.co.uk

How can you support?

Raise awareness by promoting the programme.

You can access our leaflets and posters via our [website](#)

Recruiting through us

Gain access to a pool of more than 50,000 'work ready' candidates from our specialist employment programmes. Contact us below on;

0300 456 8106

employers@maximusuk.co.uk

Partnering with us

Our Community Partnership Network focuses on partnerships with public, private and third sector organisations to support individuals and communities to thrive.

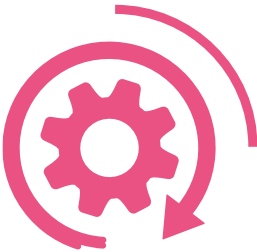
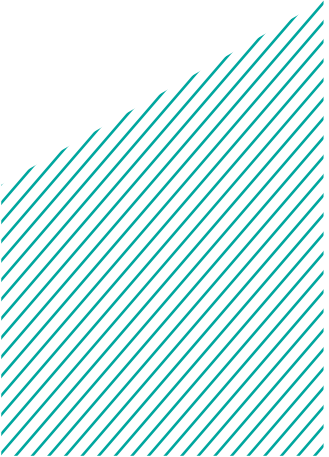
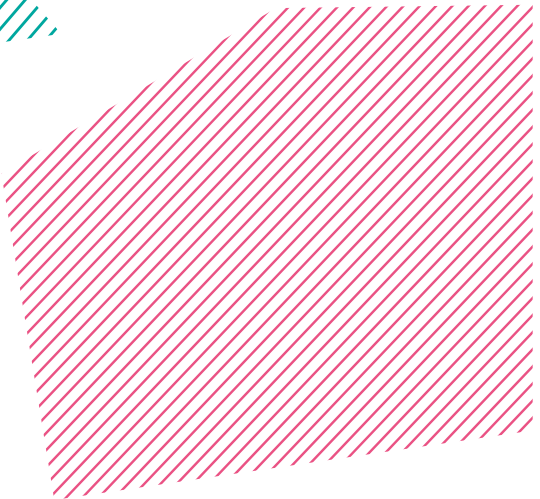
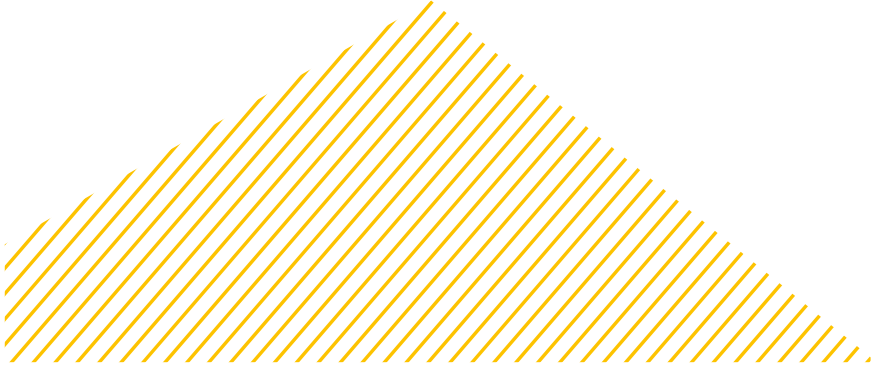
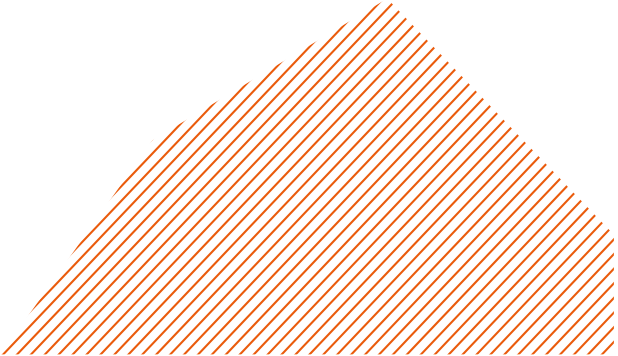
Register your interest now.

maximus

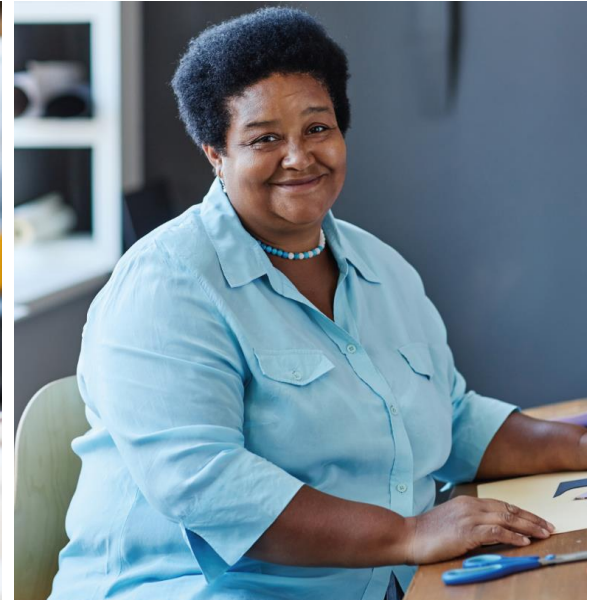
Work and Health
Programme
— ■ ■ —


Department
for Work &
Pensions
In
partnership
with

USEFUL ASSETS - GRAPHICS



USEFUL ASSETS - IMAGES



maximus

Work and Health
Programme
— ■ ■ —

In
partnership
with

Department
for Work &
Pensions

USEFUL ASSETS - LOGOS

maximus

**Work and Health
Programme**
— ■■ —

In
partnership
with



**Department
for Work &
Pensions**

maximus

**Work and Health
Programme**
— ■■ —

In
partnership
with



**Department
for Work &
Pensions**