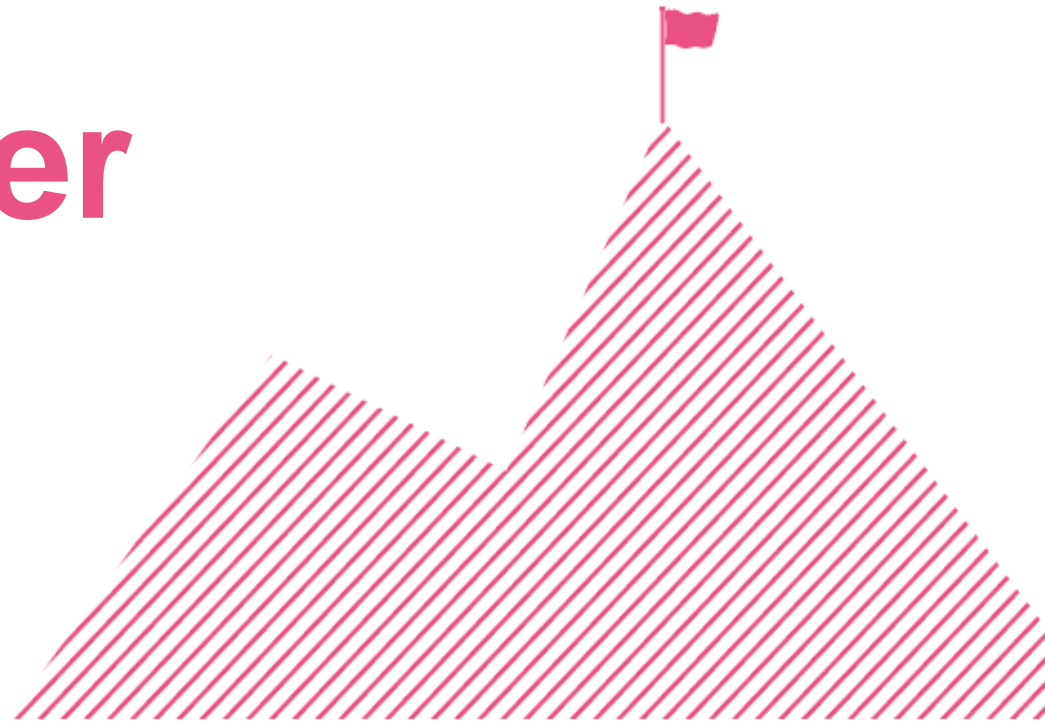


Work and Health Programme Pioneer Wales



maximus

Work and Health
Programme



In
partnership
with



Department
for Work &
Pensions

What is WHP Pioneer?

This service provides specialist employment support for people in **Wales** who are **not in work**.

WHP Pioneer is the latest phase of Universal Support, delivered by Maximus on behalf of the Department for Work and Pensions.



maximus

Work and Health
Programme
— ■■ —


Department
for Work &
Pensions
In
partnership
with

Tailored support

WHP Pioneer supports individuals to:



Create a CV, apply for jobs, and prepare for interviews and work placements



Be more confident and improve their health and wellbeing



Learn new skills, train in a new sector and gain qualifications



Find a new job or self-employment and settle into their role

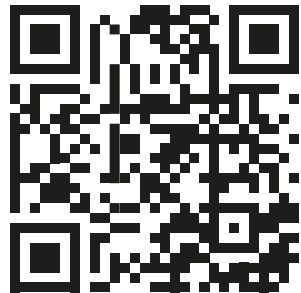
maximus

Work and Health
Programme
— ■■ —


Department
for Work &
Pensions
In
partnership
with

Referral process

Individuals can refer themselves to WHP Pioneer via:



whpp.maximusuk.co.uk

Or contact us to find out more:

0300 456 8106

PioneerWales@maximusuk.co.uk

maximus

Work and Health
Programme
— ■■ —

In
partnership
with  Department
for Work &
Pensions

How can you support?

Raise awareness by promoting the programme

You can access our leaflets and posters via our [website](#)

Recruiting through us

Gain access to a pool of more than 50,000 'work ready' candidates from our specialist employment programmes. Contact us below on;

0300 456 8106

employers@maximusuk.co.uk

Partnering with us

Our [Community Partnership Network](#) focuses on partnerships with public, private and third sector organisations to support individuals and communities to thrive.

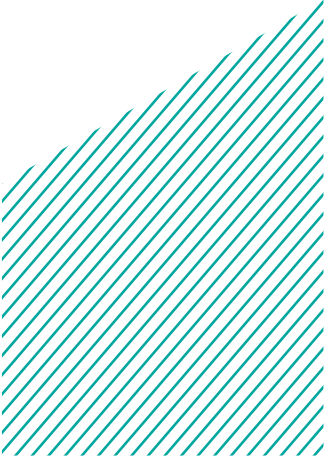
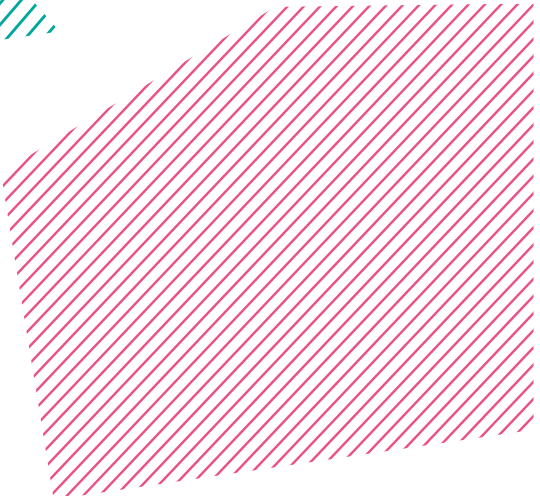
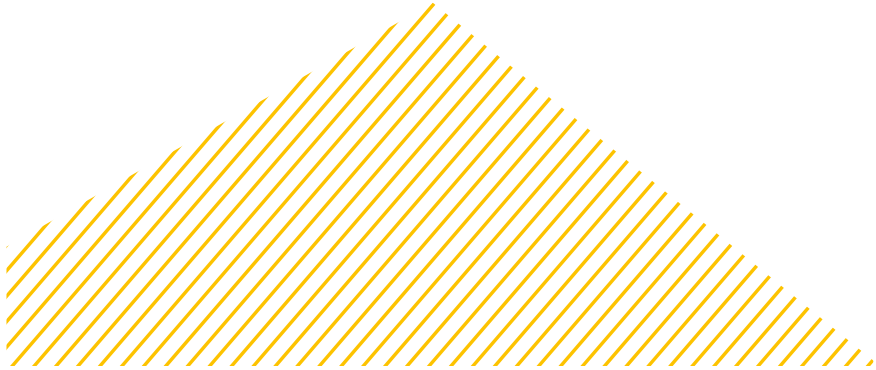
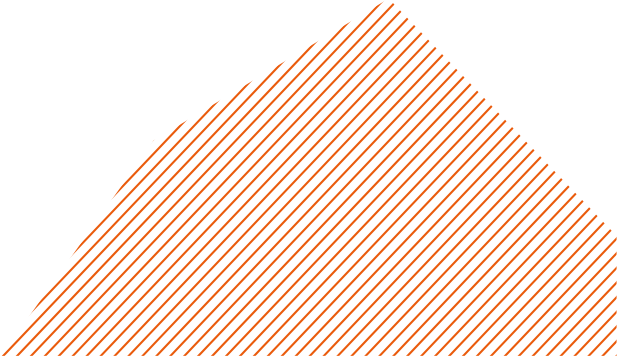
Register your interest now.

maximus

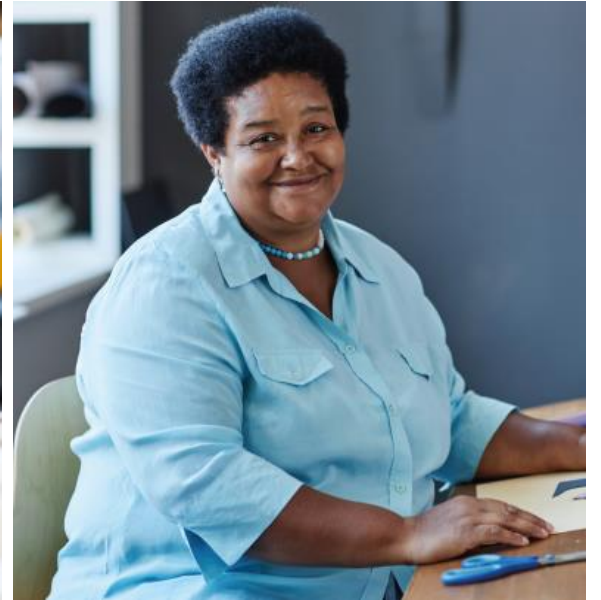
Work and Health
Programme
— ■ ■ —


Department
for Work &
Pensions
In
partnership
with

USEFUL ASSETS - GRAPHICS



USEFUL ASSETS - IMAGES



maximus

Work and Health
Programme
— ■ ■ —


Department
for Work &
Pensions
In
partnership
with

USEFUL ASSETS - LOGOS

maximus

**Work and Health
Programme**
— ■■ —

In
partnership
with



**Department
for Work &
Pensions**

maximus

**Work and Health
Programme**
— ■■ —

In
partnership
with



**Department
for Work &
Pensions**