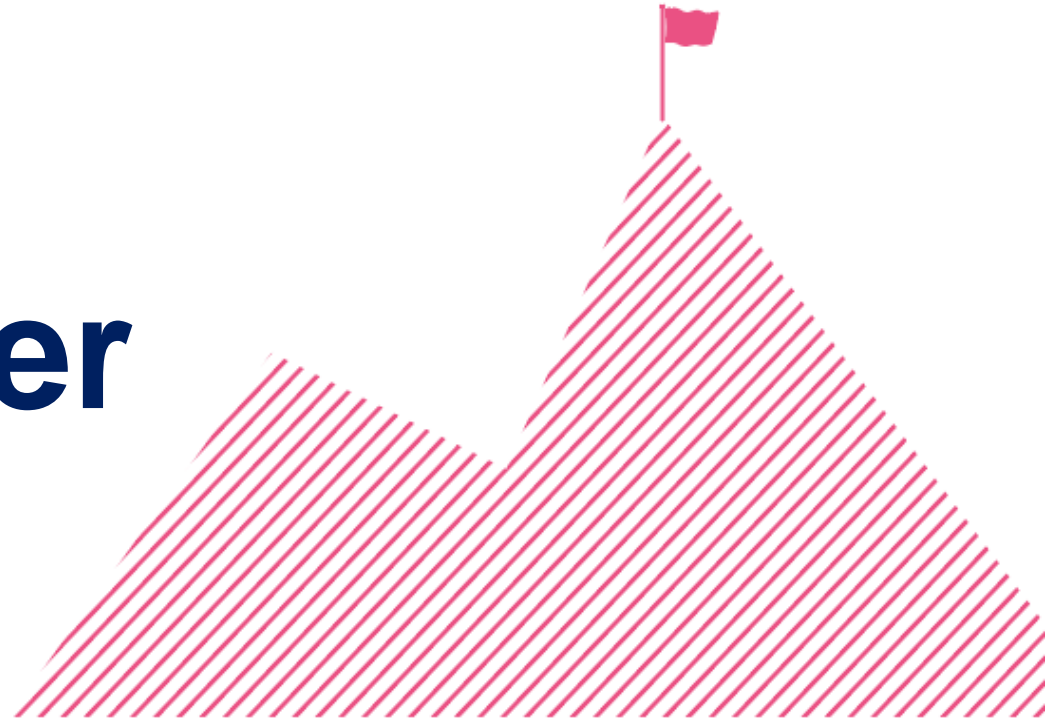


# Local London Work and Health Programme Pioneer



**maximus**



In partnership with  
  
Department  
for Work &  
Pensions

# What is Local London WHP Pioneer?

This service provides specialist employment support for people in **London** who are **not in work**.

WHP Pioneer is the latest phase of Universal Support, delivered by Maximus for Local London, on behalf of the Department for Work and Pensions.



maximus



# Tailored support

Local London WHP Pioneer supports individuals to:



**Create a CV**, apply for jobs, and prepare for interviews and work placements



**Be more confident** and improve their health and wellbeing



**Learn new skills**, train in a new sector and gain qualifications



**Find a new job or self-employment** and settle into their role

**maximus**



# Referral process

Individuals can refer themselves to WHP Pioneer via:



[whpp.maximusuk.co.uk](https://whpp.maximusuk.co.uk)

Or contact us to find out more:

0300 456 8110

PioneerLondon@maximusuk.co.uk

maximus



In partnership with  
  
Department  
for Work &  
Pensions

# How can you support?

## Raise awareness by promoting the service

You can access our leaflets and posters via our [website](#)

## Recruiting through us

Gain access to a pool of more than 50,000 'work ready' candidates from our specialist employment programmes. Contact us on:

**0300 456 8110**

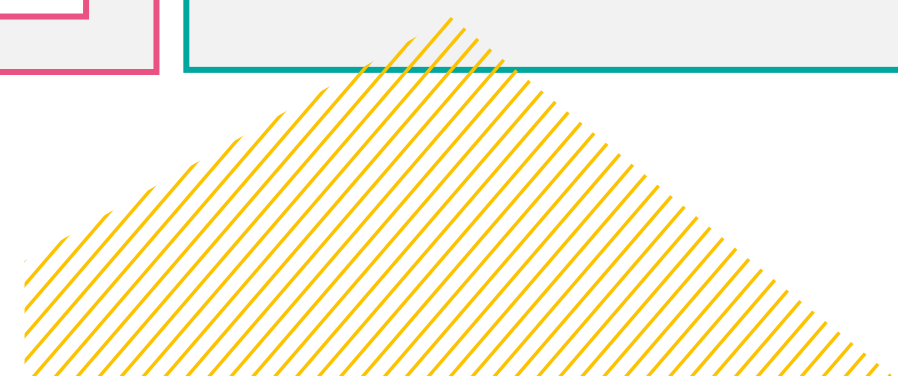
**[employers@maximusuk.co.uk](mailto:employers@maximusuk.co.uk)**

## Partnering with us

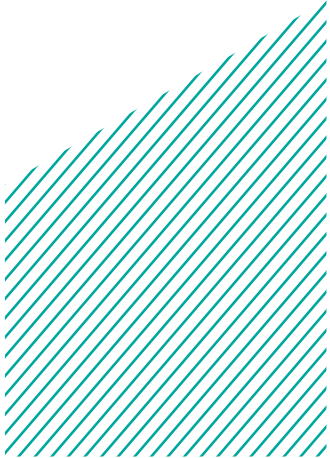
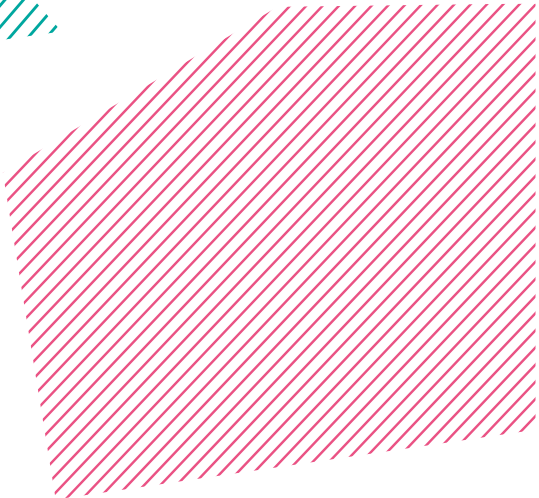
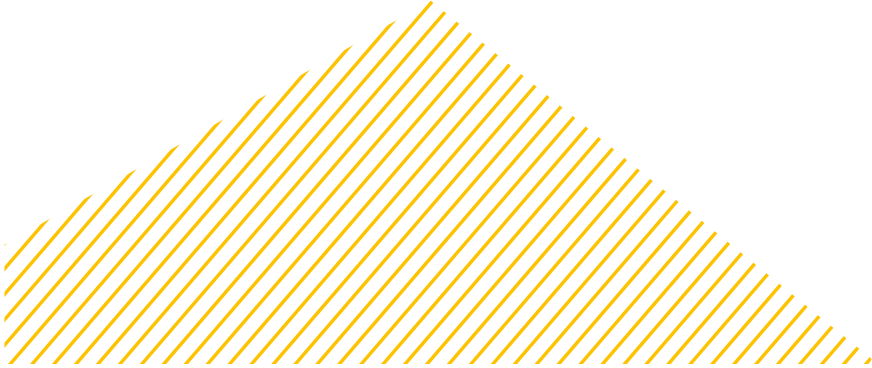
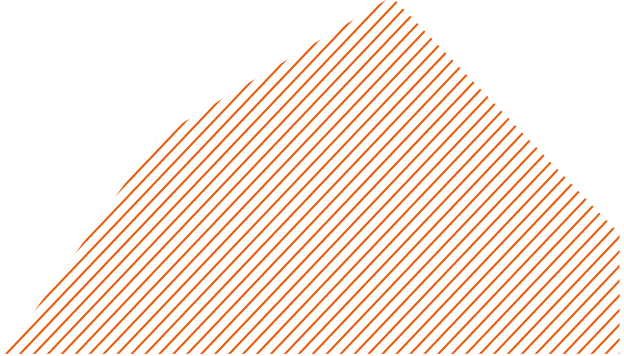
Our [Community Partnership Network](#) focuses on partnerships with public, private and third sector organisations to support individuals and communities to thrive.

**Register your interest now.**

**maximus**



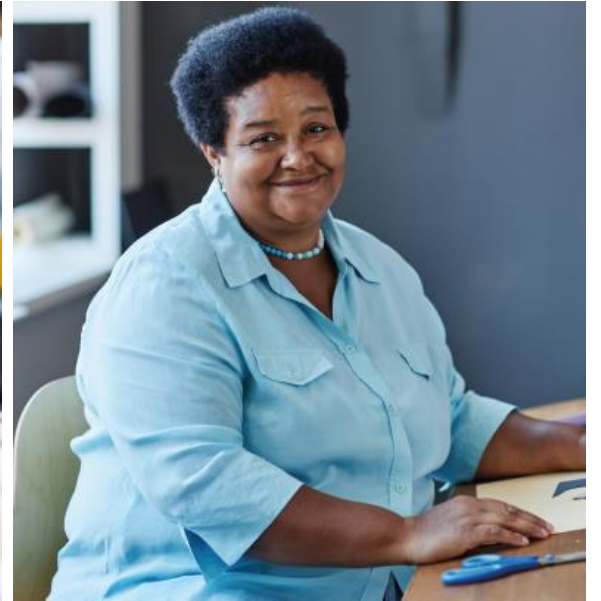
# USEFUL ASSETS - GRAPHICS



maximus



# USEFUL ASSETS - IMAGES



maximus



In partnership with  
Department for Work & Pensions

# USEFUL ASSETS - LOGOS

**maximus**



**maximus**

