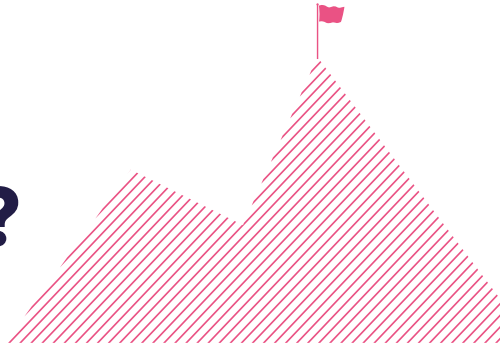


Need help finding work?



Work and Health Programme Pioneer* provides specialist employment support for people in **Wales** who are **not in work**.



maximus

Work and Health
Programme
— ■ ■ —


Department
for Work &
Pensions
In
partnership
with

Our support can help you to:



Create a CV, apply for jobs, and prepare for interviews and work placements



Be more confident and improve your health and wellbeing



Learn new skills, train in a new sector and gain qualifications



Find a new job or self-employment and settle into your role

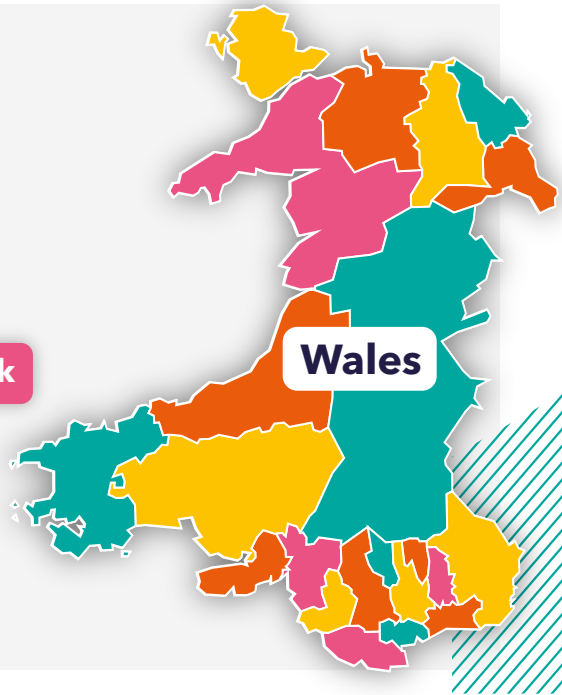
Find out
if you can apply now



whpp.maximusuk.co.uk

Or call us to find out more:

0300 456 8106



*Eligibility criteria apply. **WHP Pioneer is the latest phase of Universal Support.** It is delivered by Maximus on behalf of the Department for Work and Pensions.

For alternative formats, email marketing@maximusuk.co.uk quoting X22-1733